

P-710

GENERAL

Purgemeter made of all fluorocarbon resin. Suitable for various corrosive solutions. Lightweight and extra-compact.

MAJOR APPLICATIONS

General purpose (Small flow rate)

STANDARD SPECIFICATION

Measuring object	Liquids and gases	
Measuring range	Water	Min. 3~30 mL/min. Max. 0.4~2 L/min.
	Air	Min. 50~500 mL/min(nor). Max. 2~20 L/min(nor).
Range ability	10:1	Select P-772 for large flow type
Accuracy	±5 %F.S.	
Max. Op. Press.	0.5 MPa	
Max. Op. Temp.	70 °C	
Material	Std.	Option (Specify by model code)
	Body	ETFE
	Tapered tube	Heat-resistant glass
	Packing	PTFE
	Support	Poly-ascethal
Cover	Poly-carbonate	PPS is available as option
Connection	Std.	Rc1/8
	Opt.	Tube end fitting OD=6.35 mm, 6 mm, 8 mm (Specify the tube length)
Mounting	Std.	Thread mount onto panel front or panel-rear installation.
MASS (std. type)	0.1 kg	

* Consult factory for details.

ALARM OUTPUT

Type	Availability	Reference pages
Reed switch type alarm unit	General	×
	CE, UL Version	×
PAU Optical alarm unit	○	52 page

STANDARD FLOW RATE TABLE

(In case Op. Press at gas is not OMPa, refer to page 1.)

In case tapered tube material code is G		In case tapered tube material code is T	
Air (0 MPa, 0 °C)	* Water	Water	
50 ~ 500 mL/min (nor)	3 ~ 30 mL/min (Water)		
0.1 ~ 1 L/min (nor)	5 ~ 50 mL/min		
0.2 ~ 2 L/min (nor)	10 ~ 100 mL/min		
0.3 ~ 3 L/min (nor)	20 ~ 200 mL/min		
0.5 ~ 5 L/min (nor)	30 ~ 300 mL/min		
1 ~ 10 L/min (nor)	50 ~ 500 mL/min	50 ~ 500 mL/min	
2 ~ 20 L/min (nor)	0.1 ~ 1 L/min	0.1 ~ 1 L/min	
	0.12 ~ 1.2 L/min	0.12 ~ 1.2 L/min	
	0.4 ~ 2 L/min	0.4 ~ 2 L/min	

* The ranges more than or equal to 0.12-1.2 L/min of water are applicable only for the models having valve codes 0 and U.

OTHER AVAILABLE OPTIONS

You can specify the following options:

Double graduations, special graduations, built-in joint type, etc. (For details, refer to ⑥ [Other Option] on page 56).



BASIC MODEL CODE

VALVE	ALARM OUTPUT	TAPERED TUBE MATERIAL	PACKING MATERIAL	CONNECTION TYPE	CONNECTION SIZE	EXAMPLE	DESCRIPTION
P-710	-U	0	-G	T	-R	1	
					1	Rc 1/8 (Standard)	Only when connection type code is R
					A	φ6.35×1t	Only when connection type code is T
					B	φ6×1t	Only when connection type code is T
					C	φ8×1t	Only when connection type code is T
					R	Rc thread (Standard)	
					T	Tube end fitting	Pillar fitting
					Z	Special	
					T	PTFE(Standard)	Rubber cushion provided
					G	Heat-resistant glass (Standard)	
					T	PCTFE	Valve (L) and Alarm Output (E, Z) cannot be selected.
					0	Not provided	Refer to page 52.
					E	PAU ALARM UNIT provided	
					Z	Special	
					0	Not provided	
					L	Bottom (gas for atmospheric pressure scale)	Refer to valve location selection guide (Page 57).
					U	Top (gas for pressure scale or for negative pressure on the secondary side)	
					Z	Special	

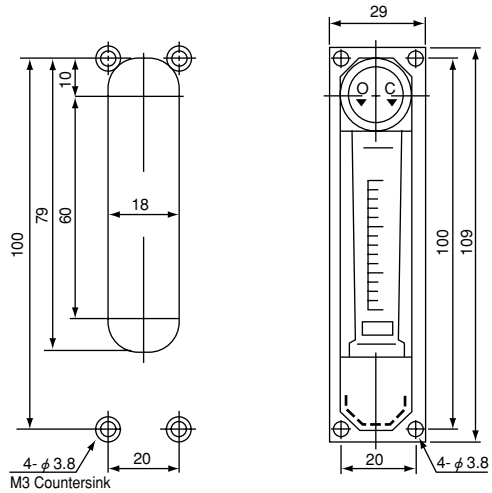
ORDERING INFORMATION

Basic model code	Designation items for detailed specifications					
P-710-□□-□□-□□	①	②	③	④	⑤	⑥
(Use model code table for selection)	Fluid name	Measuring range	Press.	Temp.	Mounting Option	Other Option
	(For specification procedure, refer to page 53)					

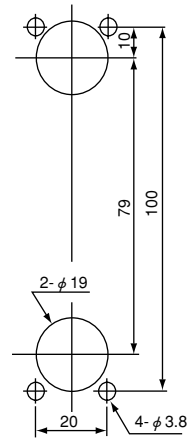
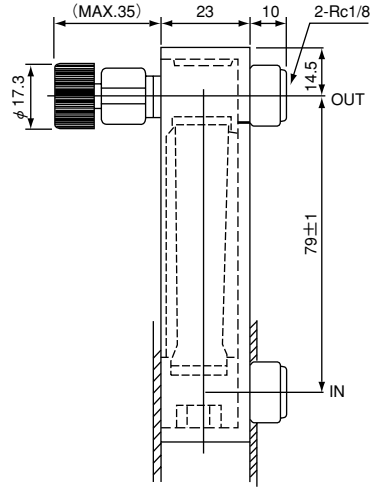
DIMENSIONS

● STANDARD TYPE

(P-710-U0-GT-R1 Valve provided at Outlet, Panel screw fixing)



Panel rear installation



Panel front installation

● Standard Material

Parts name	Standard material	Available material
Support	Poly-ascethal	PPS resin
Body	○ ETFE	PFA (Connection type T)
Tapered tube	○ Heat-resistant glass	PCTFE
Packing	○ PTFE	—
Float *	○ PTFE, Glass, Ruby	—
Valve body	○ PCTFE	—
Valve needle	○ PCTFE	—
Cover	Poly-carbonate	—

Parts with "○" touch the measuring fluid.
 *: Proper material is to be selected, depending on specifications.

● In case alarm output code is E

E	PAU ALARM UNIT provided	Refer to page 52.
---	-------------------------	-------------------

Alarm output cannot be selected when the tapered tube material is PCTFE.